



NEW REGISTON PRODUCTS CATALOG

High stock removal and high speed. Long tool life with one disc. The best choice of grinding disc!

Grinding Disc

New

BLUE CERAC

New Phase of Stock Removal and Durability

Feel the obvious benefit!



Quick attachment and removal



Triangular shaped ceramic grains with high grinding force.

Flange is not in the way from grinding because of Depressed Center.

NRS original combined pad with "power blade".



Customer Feedback

Good grinding performance and durability! The stock removal is higher than grinding wheel.

Material: Steel
Product: Heavy Machinery
Operation: Remove bead



before grinding after grinding grinding

Customer Feedback

The durability is better than competitive ceramic products, and I like it can be brought into close contact with workpiece.

Material: Steel, Stainless
Product: Fitting for vehicle
Operation: Beveling

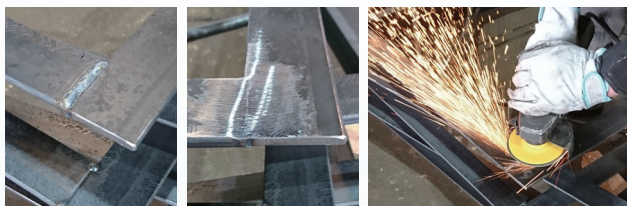


before grinding after grinding grinding

Customer Feedback

The edge of disc bends and the pad pushes workpiece. The last push works well. I like this strong pad.

Material: Steel
Product: Construction hardware
Operation: Remove bead



before grinding after grinding grinding

Specifications

| Product name | Product code | Size OD(mm) x screw size | Grit | Package (pcs x Inner box) | Max rpm |
|--------------|--------------|-----------------------------|------|------------------------------|-----------|
| Blue Cerac | BC100-36 | 100 x M10 | #36 | 50pcs (10pcs x 5) | 15,000rpm |

Recommended operation

Grind, Remove mill scale, Surface grind, Deburr, Bevel, Remove burrnt, Polish, Remove paint

Recommended workpiece

Steel, Stainless, Aluminum, Cast iron

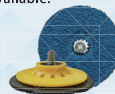


Precautions

- 1.The pad and disc are integrated, do not disassemble and use.
- 2.Use at an angle of 15 degrees or less.
- 3.Prevent side of disc from contact with corner or protrusions of weld bead.



The sister products 2 inch / 3 inch "Mini Blue Cerac" are available.



Aluminum damp-proof packaging

mini BLUE CERAC



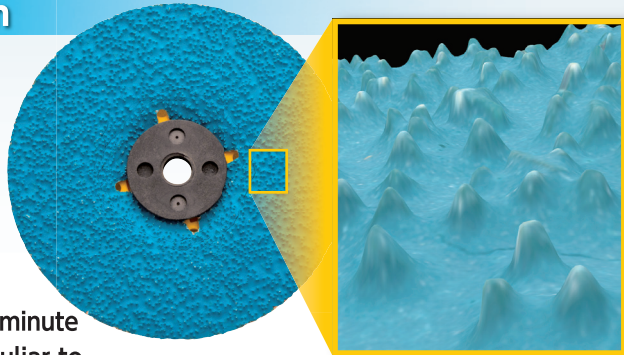
NEW REGISTON

2-1-1 AYUMINO IZUMI-CITY OSAKA 594-1157 JAPAN
HOME PAGE <https://www.newregiston.co.jp/en/>

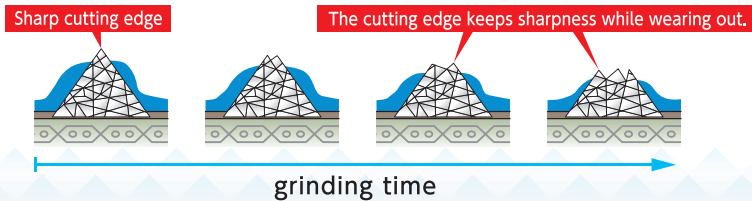
Features of Depressed Center Disc "Blue Cerac"

1 Ceramic Grain

- 1 Triangular shaped ceramic grains with high grinding force.
- 2 Maintain high stock removal with minute self-crushability peculiar to ceramic grain.



Enlarged picture of the surface of ceramic grain



2 Depressed Center

Flange is not in the way from grinding because of Depressed Center.



Blue Cerac Depressed center type

Straight type



3 Combined Pad

- 1 Adjusting grinding pressure by NRS original pad with "power blade" prevents grain dulling and maintains high grinding force.
- 2 Cushioned pad helps disc contacting with workpiece softly and less vibration.
- 3 Grinding disc, pad and flange are integrated (One-touch Type), prevent disc run-out and deformation.



Quick attachment and removal without tools



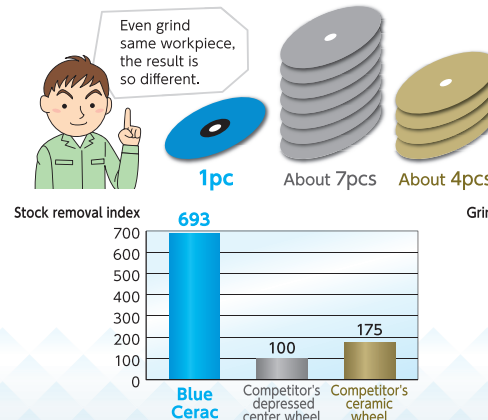
Vibration level (m/s²)

| | |
|-------------------------------------|-----------|
| Blue Cerac | 8.3~9.2 |
| Competitor's depressed center wheel | 15.8~17.0 |
| Competitor's ceramic wheel | 9.3~13.4 |

4 New Phase of Stock Removal and Durability

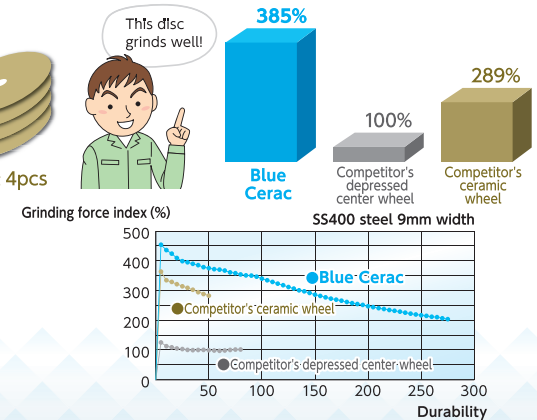
Total stock removal index

The total stock removal of "Blue Cerac depressed center type" is same as that of 7 pcs of normal depressed center wheel!!



Grinding force index

The grinding force of "Blue Cerac depressed center type" is as 4 times as that of normal depressed center wheel!!



Stock removal index when SS400 is grinded until 100φ wheels are used up. (The performance of competitor's depressed center wheel is defined as 100.) *Our experimental data.

Grinding force index when SS400 is grinded until 100φ wheels are used up. (The performance of competitor's depressed center wheel is defined as 100%.) *Our experimental data.